



Foothill Gold Line

KIEWIT-PARSONS, A JV

-Glendora to Pomona-

# NOTICE: Long Term Lane Closures

**GAREY AVE. RAILROAD CROSSING CONSTRUCTION  
NORTH OF ARROW HWY. (CITY OF POMONA)**

**ONGOING - NOVEMBER 30, 2025 (EXTENDED)**

## CONSTRUCTION ACTIVITY

As part of the 9-mile Foothill Gold Line light rail project, crews will continue construction on Garey Ave. at the railroad crossing north of Arrow Hwy. and south of Bonita Ave. to complete final aesthetic and punchlist operations. Northbound and southbound lanes on Garey Ave. at the railroad crossing will be closed intermittently in each direction. One lane in each direction will be maintained at all times. Access to residential areas and businesses will be maintained at all times.

## WHEN

Ongoing and continuing thru November 30, 2025.

- Intermittent lane closures will be in effect in both directions during daylight hours only.
- Allowable Work Hours: 7:00 AM - 5:00 PM, Monday thru Saturday.

## WHERE

Construction activities will take place in both northbound and southbound lanes of Garey Ave. between Arrow Hwy. and Bonita Ave., at the railroad crossing. Thru traffic and access to residential areas and businesses will be maintained at all times.

## TRAFFIC ADVISORIES

- One lane in each direction on Garey Ave. between Arrow Hwy. and Bonita Ave. at the railroad crossing will be closed intermittently. One lane in each direction will be maintained at all times.
- Access to residential areas and businesses will be maintained at all times.

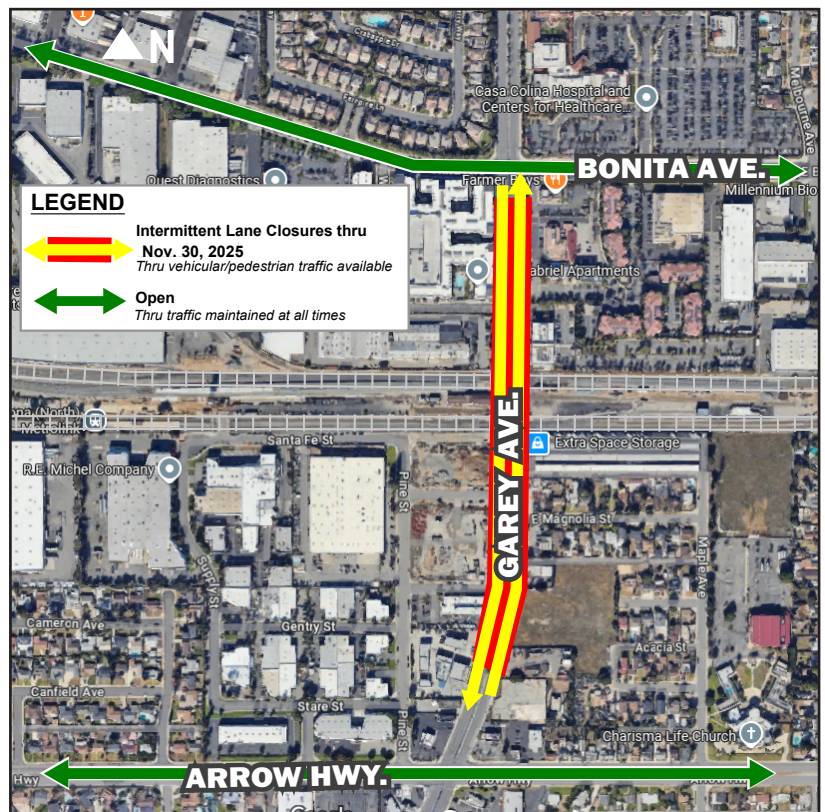
## NOTE TO RESIDENTS / BUSINESS OWNERS

The red area in the map shows the work zone. Access thru the work zone will be available throughout the duration of these operations.

## STAY SAFE

Please obey all posted construction signs and do not enter the construction work zone.

**Para información en español por favor llame o envíe un mensaje de texto a (626) 718-6898.**



Original Notice: November 2021; Updated: Nov. 2025

### FOOTHILL GOLD LINE QUESTIONS?

**Project Construction Questions Hotline:** (626) 830-3680  
**For General Project Questions:** (626) 471-9050

**Email:** CommunityRelations@Kiewit-Parsons.com  
**Email:** PublicAffairs@Foothillgoldline.org

**Stay ahead of construction, sign up for alerts: [www.foothillgoldline.org](http://www.foothillgoldline.org)**

*\*Construction schedules are subject to change for various reasons, including, but not limited to, weather conditions and unforeseen delays.*