



# NOTICE TO POMONA NORTH STATION USERS: Temporary Parking Lot Changes

## FEBRUARY 10 - FEBRUARY 14, 2025 (CITY OF POMONA)

### CONSTRUCTION ACTIVITY

As part of the 9.1-mile Foothill Gold Line light rail project, crews have reopened both the eastern and western sides of the Pomona North Metrolink Station parking lot. Crews will close the center 10 parking spots to complete the final landscaping, paving and striping operations for approximately 5 days. During the 5 days, no thru access will be permitted. Both the western portion of the parking lot and the Fulton Rd. entrance as well as the eastern side and the Santa Fe St. entrance will remain open and accessible for all riders.

### WHEN

Beginning Monday, February 10th, thru Friday, February 14th, 2025

- Work Hours: 7:00 AM - 8:00 PM. NOTE: Occasional longer work hours may be performed during the period.

### WHERE

Final construction activities will take place within the parking area shown below in red - in the center of the Metrolink parking lot, temporarily eliminating thru traffic and access to 10 parking spaces.

### TRAFFIC ADVISORIES

Vehicles accessing the Pomona North station and parking can access using either the Fulton Rd. entrance from northbound Fulton Rd. or the Santa Fe St. entrance via Pine St. Pedestrian access will remain available at both entrances. No thru access will be permitted during the work period listed above.

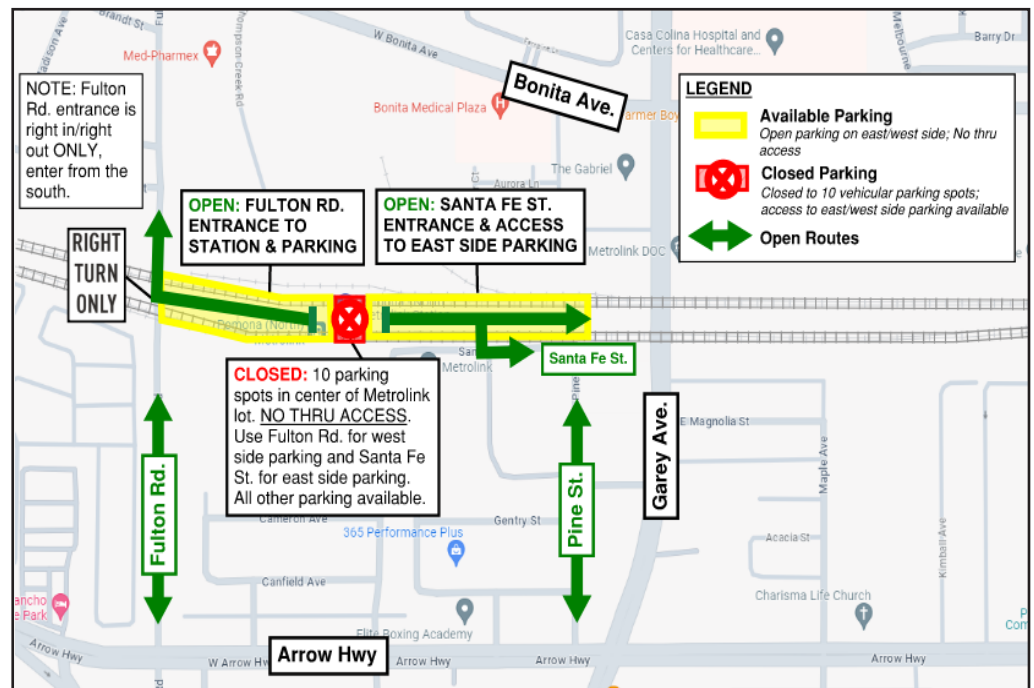
### NOTE TO PARKING LOT USERS

Typical noise from construction equipment will be produced near the active work zones, including the use of trucks and light plants. Large equipment and deliveries will be coming and going from the work zones regularly.

### STAY SAFE

Please obey all posted construction signs and do not enter the construction work zone.

**Para información en español por favor llame o envíe un mensaje de texto a (626) 513-5788.**



### QUESTIONS?

**Project Construction Questions Hotline:** (626) 513-5788 **Email:** CommunityRelations@Kiewit-Parsons.com

**General Project Questions:** (626) 471-9050 **Email:** PublicAffairs@Foothillgoldline.org

**Stay ahead of construction, sign up for alerts: [www.foothillgoldline.org](http://www.foothillgoldline.org)**

*\*Construction schedules are subject to change for various reasons, including, but not limited to, weather conditions and unforeseen delays.*