



Foothill Gold Line

KIEWIT-PARSONS, A JV

-Glendora to Pomona-

NOTICE: One-Night Full Street Closure

FULTON RD. BETWEEN ARROW HWY. & 1ST ST. (CITIES OF LA VERNE & POMONA) OCTOBER 18, 2024 (ONE NIGHT ONLY)

CONSTRUCTION ACTIVITY

As part of the 9.1-mile Foothill Gold Line light rail project, crews will complete the installation of traffic signals on Fulton Rd. and Arrow Hwy in the Cities of La Verne and Pomona. This work will take place on the northeast and northwest intersection corners of Fulton Rd. and Arrow Hwy. This work requires a full closure of Fulton Rd. between Arrow Hwy and 1st St. for one night only. During the one night closure, thru traffic will not be accessible. Residential access will be maintained.

WHEN

Friday night, October 18th, 2024, Fulton Rd. will be fully closed to all thru traffic (vehicular and pedestrian) between Arrow Hwy. and 1st St. Arrow Hwy. (south of the closure) and 1st St. (north of the closure) will remain open and accessible. Detour routes shown below, see map.

- Nighttime Work Hours: 10:00 PM - 4:00 AM. NOTE: Work is taking place during Metrolink's non-operating hours.

TRAFFIC ADVISORIES

- Fulton Rd. will be fully closed to vehicular and pedestrian traffic north of Arrow Hwy.
- Access to homes within the closure area north of Arrow Hwy. and south of 1st St. will be maintained at all times.

PLAN YOUR ROUTE AND BE PREPARED

- A detour route (see map below) will be in place during the closure and signage will be posted to direct motorists and pedestrians as well as Metrolink customers. Please follow detour signs.
 - ✓ Fulton Rd. will be fully closed to all thru traffic at Arrow Hwy between Arrow Hwy. and 1st St.
 - ✓ Garey Ave. (northbound and southbound) will serve as the main detour route, see details below.
 - ✓ Arrow Hwy. (eastbound and westbound) will remain open to all traffic.
 - ✓ Bonita Ave. (eastbound and westbound) will remain open to all traffic.

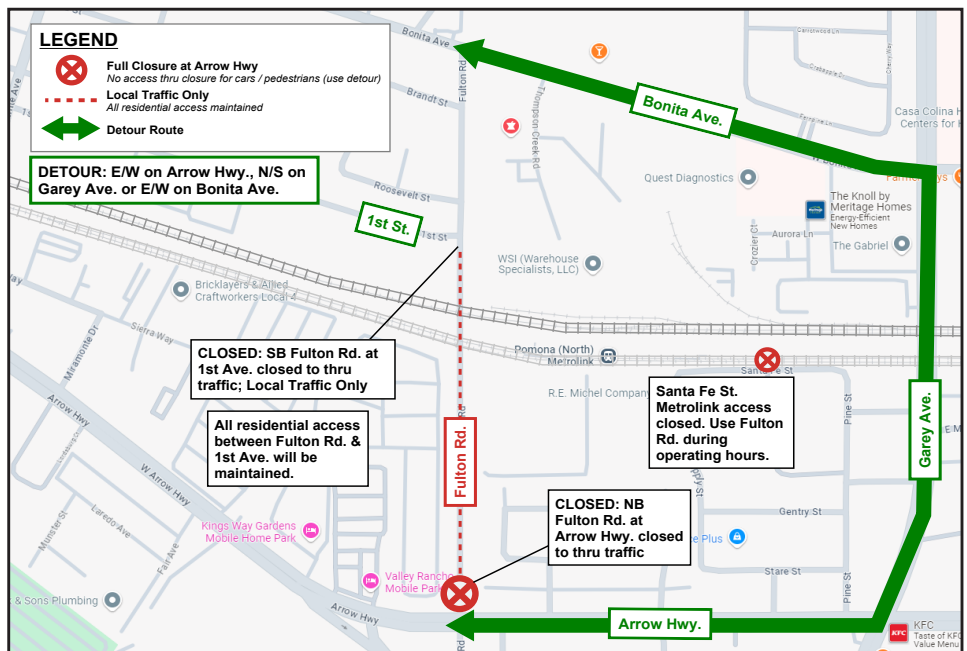
NOTE TO RESIDENTS / BUSINESS OWNERS

- Noise from construction equipment will be produced near the active work zones.
- Bus stops may be temporarily relocated, for more information:
 - ✓ Foothill Transit Bus: (800) RIDE-INFO/ (800) 743-3463 or foothilltransit.org

STAY SAFE

Please obey all posted construction signs and do not enter the construction work zone.

Para información en español por favor llame o envíe un mensaje de texto a (626) 513-5788.



QUESTIONS?

Project Construction Questions Hotline: (626) 513-5788 **Email:** CommunityRelations@Kiewit-Parsons.com

General Project Questions: (626) 471-9050 **Email:** PublicAffairs@Foothillgoldline.org

Stay ahead of construction, sign up for alerts: www.foothillgoldline.org

**Construction schedules are subject to change for various reasons, including, but not limited to, weather conditions and unforeseen delays.*