



# NOTICE: Light Rail Track Operations

## BETWEEN CITRUS AVE. & BARRANCA AVE. IN THE RAILROAD CORRIDOR (CITY OF GLENDORA)

### APRIL 8 - JUNE 1, 2024

#### CONSTRUCTION ACTIVITY

As part of the Foothill Gold Line light rail project, crews will be working daily in the railroad corridor in the City of Glendora between Citrus Ave. and Barranca Ave. Crews will be working to connect the existing light rail track that currently ends just east of the APU/Citrus Station with the new four-station light rail extension from the APU/Citrus Station to Pomona. During the daytime operations, crews will be performing underground utility work including installing new concrete drainage, building new soundwalls, and installing light rail track and new Overhead Catenary System poles for the train’s electrification system.

#### WHEN

Daily beginning Monday, April 8th thru Saturday, June 1st, 2024.

- Approved working hours: 7:00 AM - 9:00 PM. NOTE: Occasional longer work hours and shifts on Sundays may be performed during the period.

#### TRAFFIC ADVISORIES

No traffic impacts are expected with this work. Trucks/equipment may be noticeable on Barranca Ave., Elderberry Dr., or Citrus Ave. and trucks will be parking on Elderberry Ave. All operations will take place within the railroad corridor and equipment loaded in via hi-rail truck (truck that drives safely on the tracks).

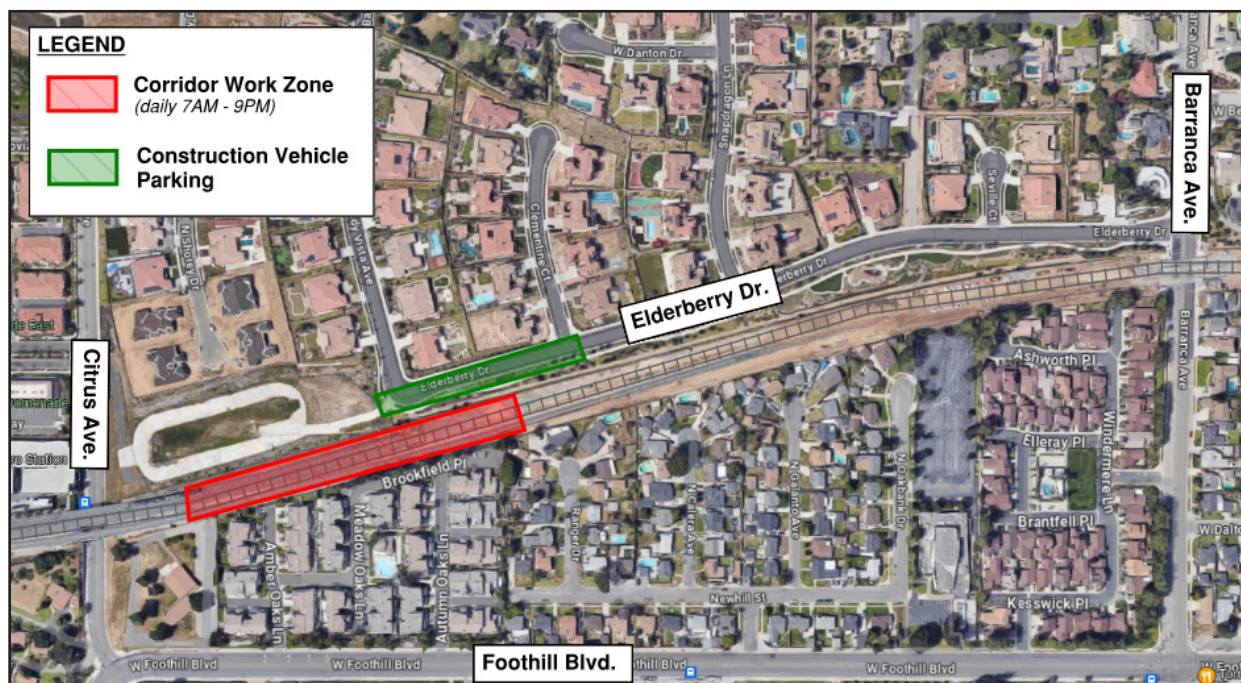
#### NOTE TO RESIDENTS / BUSINESS OWNERS

Noise from construction equipment and trucks will be produced near the active work zones.

#### STAY SAFE

Please obey all posted construction signs and do not enter the construction work zone.

**Para información en español por favor llame o envíe un mensaje de texto a (626) 513-5788.**



#### QUESTIONS?

Project Construction Questions Hotline: (626) 513-5788 Email: [CommunityRelations@Kiewit-Parsons.com](mailto:CommunityRelations@Kiewit-Parsons.com)

General Project Questions: (626) 471-9050 Email: [PublicAffairs@Foothillgoldline.org](mailto:PublicAffairs@Foothillgoldline.org)

Stay ahead of construction, sign up for alerts: [www.foothillgoldline.org](http://www.foothillgoldline.org)

\*Construction schedules are subject to change for various reasons, including, but not limited to, weather conditions and unforeseen delays.