



Foothill Gold Line

KIEWIT-PARSONS, A JV

-Glendora to Pomona-

COURTESY NIGHTTIME NOTICE: Eight (8) Hour Water Shutdown

FOOTHILL BLVD., WEST OF ELWOOD AVE. (CITY OF GLENDORA) APRIL 3, 2024

CONSTRUCTION ACTIVITY

As part of the 9.1-mile Foothill Gold Line light rail project, crews will be working on Foothill Blvd., west of Elwood Ave. in Glendora to perform water system improvement operations, including a main hydrant relocation on the northwest corner. Work will take place during daytime hours, but the work will also result in the City temporarily shutting off water to several properties overnight (see map below).

WHEN

Wednesday, April 3rd (for approximately 8 hours) water will be shut off from, 8:00 PM - 4:00 AM during overnight hours.

WHERE

Construction activities will occur within the Elwood Ave. and Foothill Blvd. intersection.

TRAFFIC ADVISORIES

Foothill Blvd. will have limited thru traffic. All Church and residential access will be maintained.

WHAT TO EXPECT

Typical noise from construction equipment will be produced near the active work zones such as air compressors, backhoes, and other construction vehicles during daytime operations.

Water is expected to be shut off to several properties for approximately 8 hours (see map for details).

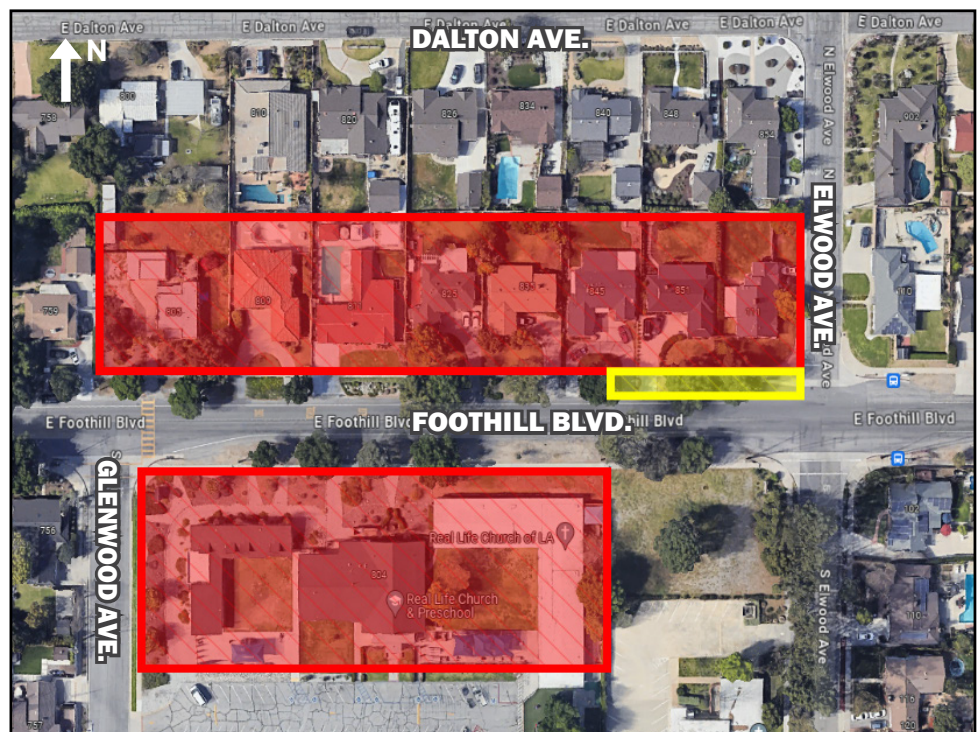
WORK ZONE

The red area in the map shows the affected properties for the water shutoff. The work zone is shown in yellow.

STAY SAFE

Please obey all posted construction signs and do not enter the construction work zone.

Para información en español por favor llame o envíe un mensaje de texto a (626) 513-5788.



QUESTIONS?

Project Construction Questions Hotline: (626) 513-5788 **Email:** CommunityRelations@Kiewit-Parsons.com

General Project Questions: (626) 471-9050 **Email:** PublicAffairs@Foothillgoldline.org

Stay ahead of construction, sign up for alerts: www.foothillgoldline.org

**Construction schedules are subject to change for various reasons, including, but not limited to, weather conditions and unforeseen delays.*