



NOTICE: Nighttime Track Operations BETWEEN CITRUS AVE. & BARRANCA AVE. IN THE RAILROAD CORRIDOR (CITY OF GLENDORA) APRIL 1 - APRIL 4, 2024

CONSTRUCTION ACTIVITY

As part of the Foothill Gold Line light rail project, crews will be working nightly in the railroad corridor in the City of Glendora between Citrus Ave. and Barranca Ave. Crews will be working to connect the existing light rail track that currently ends just east of the APU/Citrus Station with the new light rail track extension that will connect the APU/Citrus Station with the new extension to Pomona. During the night operations, crews will bring in fence panels and k-rail to safely close off work zones while trains are not running. Once the work zone is secure, the full operation will move to daytime hours.

WHEN

Nightly beginning Monday, April 1st thru April 4th, 2024.

- Nighttime Work Hours: 7:00 PM - 6:00 AM. NOTE: Occasional longer work hours during day shifts may be performed during the period and after.

TRAFFIC ADVISORIES

No traffic impacts are expected with this work. Trucks/equipment may be noticeable on Barranca Ave., Elderberry Dr., or Citrus Ave. and parking on Elderberry Ave. All operations will take place within the railroad corridor and equipment loaded in via hi-rail truck (truck that drives safely on the tracks).

NOTE TO RESIDENTS /

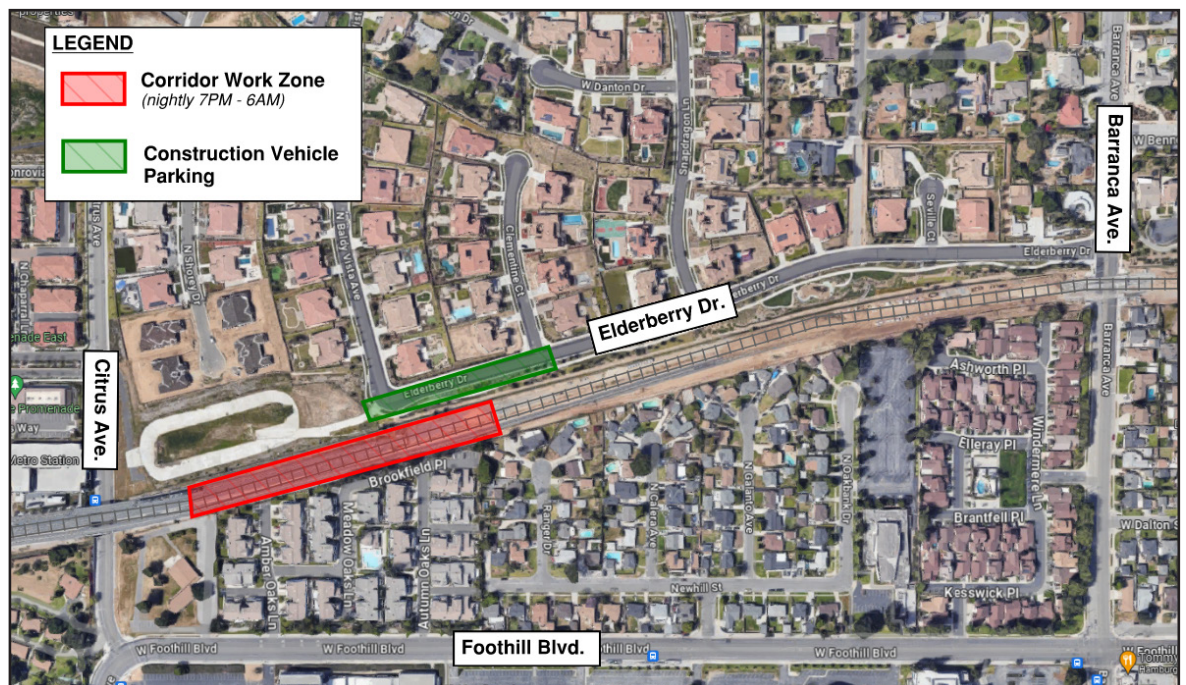
BUSINESS OWNERS

Noise from construction equipment and trucks will be produced near the active work zones, but will meet nighttime noise requirements. Lighting will also be needed, but directed toward the work zone.

STAY SAFE

Please obey all posted construction signs and do not enter the construction work zone.

Para información en español por favor llame o envíe un mensaje de texto a (626) 513-5788.



QUESTIONS?

Project Construction Questions Hotline: (626) 513-5788 **Email:** CommunityRelations@Kiewit-Parsons.com

General Project Questions: (626) 471-9050 **Email:** PublicAffairs@Foothillgoldline.org

Stay ahead of construction, sign up for alerts: www.foothillgoldline.org

**Construction schedules are subject to change for various reasons, including, but not limited to, weather conditions and unforeseen delays.*