



Foothill Gold Line

-Glendora to Pomona-

KIEWIT-PARSONS, A JV

UPDATED NOTICE: Full Directional Closures

BONITA AVE. & CATARACT AVE. (CITY OF SAN DIMAS)

MARCH 31 & APRIL 3, 2023, 7:00 AM - 11:00 PM (DATE REVISION)

CONSTRUCTION ACTIVITY

As part of the Foothill Gold Line light rail project, crews will be performing the final paving and striping operations to complete the Bonita Ave. & Cataract Ave. intersection reconstruction in the city of San Dimas. Portions of Bonita Ave. and Cataract Ave. will be fully closed for one day each for final paving and striping (updated details due to inclement weather shown below). Access to Downtown San Dimas businesses on Bonita Ave. and residential areas will be maintained at all times during the paving and striping

WHEN

Friday, March 31st, and Monday, April 3rd from 7:00 AM - 11:00 PM - Bonita Ave. between Eucla Ave. & Monte Vista Ave. will be fully closed in one direction; and Cataract Ave. will be fully closed to all traffic either north of Bonita Ave. (to 1st St.) or south of Bonita Ave. (to Railway St.).

TRAFFIC ADVISORIES

- **Friday, March 31st:** Eastbound Bonita Ave. and Cataract Ave. south of Bonita Ave. will be closed for one day only. Traffic will be maintained on westbound Bonita Ave. and on Cataract Ave. north of Bonita Ave.
- **Monday, April 3rd:** Westbound Bonita Ave. and Cataract Ave. north of Bonita Ave. will be closed for one day only. Traffic will be maintained on eastbound Bonita Ave. and on Cataract Ave. south of Bonita Ave.
- Access to Downtown San Dimas businesses on Bonita Ave. will be maintained at all times, and access to residential and business areas north and south of the work zones will be maintained via detour routes.

PLAN YOUR ROUTE AND BE PREPARED

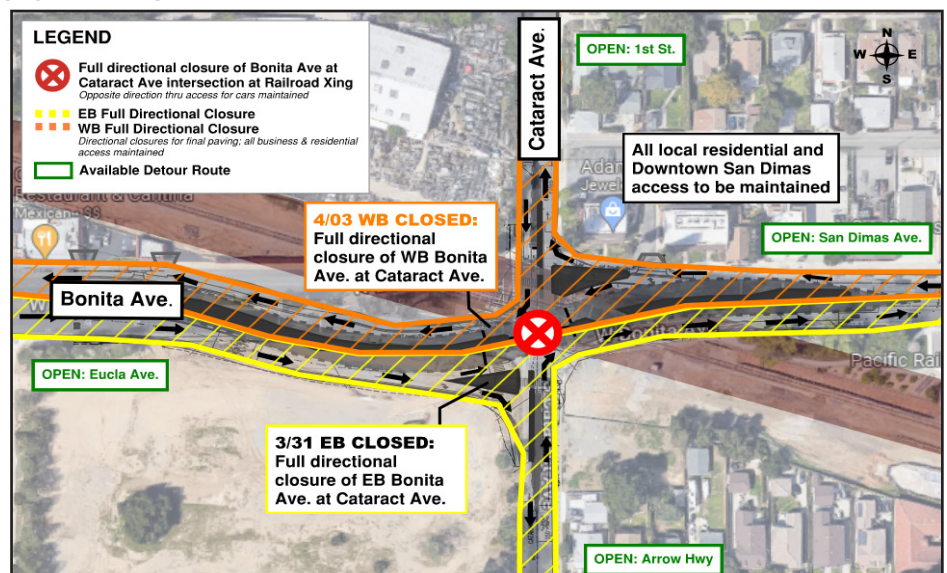
- A detour route (see map below) will be in place during the full closure and signage will be posted to direct motorists and pedestrians. Please follow detour signs.
 - ✓ 2nd St. and Arrow Hwy. (eastbound and westbound) will remain open and serve as a detour routes, see details below.
 - ✓ San Dimas Ave. and Eucla Ave. (northbound and southbound) will remain open and serve as a detour routes, see details below.

NOTE TO RESIDENTS / BUSINESS OWNERS

- Noise from construction equipment will be produced near the active work zones.
- Bus stops may be temporarily relocated, for more information:
 - ✓ Foothill Transit Bus: (800) RIDE-INFO/ (800) 743-3463 or foothilltransit.org

STAY SAFE

Please obey all posted construction signs and do not enter the construction work zone. **Para información en español por favor llame o envíe un mensaje de texto a (626) 513-5788.**



QUESTIONS?

Project Construction Questions Hotline: (626) 513-5788 Email: CommunityRelations@Kiewit-Parsons.com

General Project Questions: (626) 471-9050 Email: PublicAffairs@Foothillgoldline.org

Stay ahead of construction, sign up for alerts: www.foothillgoldline.org

*Construction schedules are subject to change for various reasons, including, but not limited to, weather conditions and unforeseen delays.