



Foothill Gold Line

KIEWIT-PARSONS, A JV

-Glendora to Pomona-

# UPDATED NOTICE: Intersection Closed

FOOTHILL BLVD. & GRAND AVE. 12-DAY CLOSURE (CITY OF GLENDORA)

**OCTOBER 29 - NOVEMBER 10, 2022 (UPDATED: 11/04/22)**

## CONSTRUCTION ACTIVITY

As part of the 9.1-mile Foothill Gold Line light rail project, KPJV crews will continue bridge and crossing construction at the Foothill Blvd. & Grand Ave. intersection. Crews will be working daytime and nighttime hours to complete drainage and utility relocation, complete work on the super-structure, remove the supporting falsework, form, pour new curbs & gutters, and provide new asphalt roadways. This work requires 12 days of the intersection being closed. Driveway access to local businesses will be maintained. Following the 12 days, traffic in all directions will be restored and maintained with intermittent lane closures on both streets through early December, when work will be mostly complete on the bridge. A pedestrian path will be maintained at the intersection at all times

## WHEN

October 29- November 10, 2022 (12 Days)

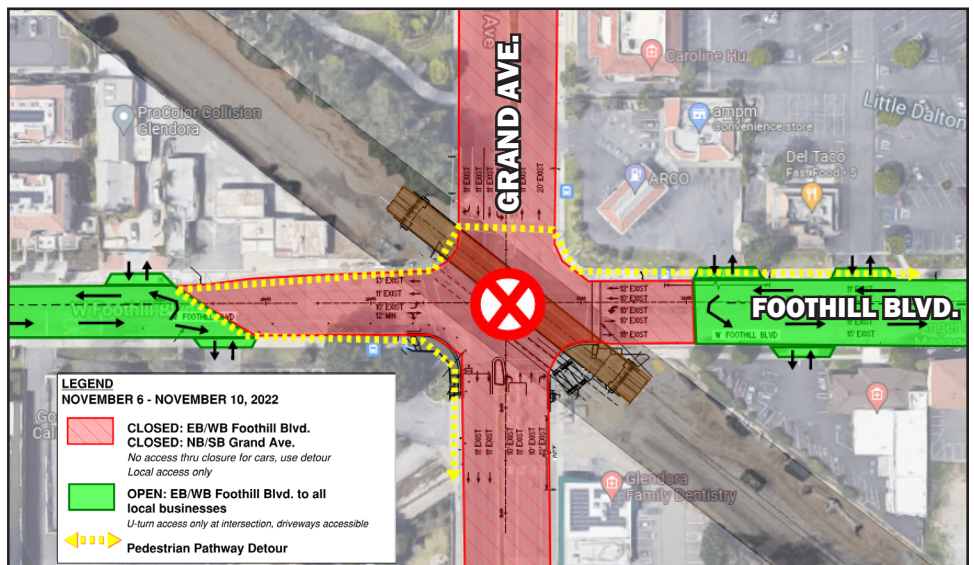
- Daytime working hours: 7:00 AM - 5:00 PM; Nighttime working hours: 6:30 PM - 6:30 AM

## TRAFFIC ADVISORIES

- UPDATED: Oct. 29 - Nov. 6:** All movements will be closed, except two of four right hand turns. OPEN: EB Foothill Blvd. to SB Grand Ave. and WB Foothill Blvd. to NB Grand Ave. All other traffic movements will be closed and detoured.
- UPDATED: Nov. 6 - Nov. 10:** Intersection will be fully closed with all traffic detoured. Driveway access will be maintained.
- Nov. 10 - Dec. 2:** Traffic in all directions will be restored, with intermittent lane closures.
- Access to homes and businesses within the closure area will be maintained, including ARCO & the Vons shopping center. A pedestrian path will be maintained at the intersection at all times.

## PLAN YOUR ROUTE AND BE PREPARED

- During this 12 day period, no thru traffic or left turns will be available through the intersection. Two of four right turn movements will be open from Oct. 29 thru Nov. 6; but the intersection will be fully closed from Nov. 6-10. Expect delays.
  - ✓ **October 29 - November 10; Daily & Nightly:** No thru access for vehicular traffic; use designated detour route.
  - ✓ **November 10 - December 2; Daily & Nightly:** Intersection thru access in all directions will be restored and maintained with intermittent lane closures.
- Designated detour route (map on back side) is as follows:
  - ✓ Barranca Ave., Glendora Ave., & Vermont Ave. (northbound and southbound) will remain open to all traffic and serve as the main detour route
  - ✓ Bennett Ave. & Route 66 (eastbound and westbound) will remain open to all traffic



## NOTE TO RESIDENTS/ BUSINESS OWNERS

- Foothill Transit Bus Line 284 will continue to run E/W along Route 66, and alternate locations for Line 488 are: Foothill Blvd. & Vecino Dr., and Grand Ave. & Ada Ave.
- For more information: Foothill Transit Bus use (800) RIDE-INFO or [foothilltransit.org](http://foothilltransit.org)

## STAY SAFE

Please obey all posted construction signs and do not enter the construction work zone.

Para información en español por favor llame o envíe un mensaje de texto a (626) 513-5788.

## QUESTIONS?

**Project Construction Questions Hotline:** (626) 513-5788 **Email:** [CommunityRelations@Kiewit-Parsons.com](mailto:CommunityRelations@Kiewit-Parsons.com)

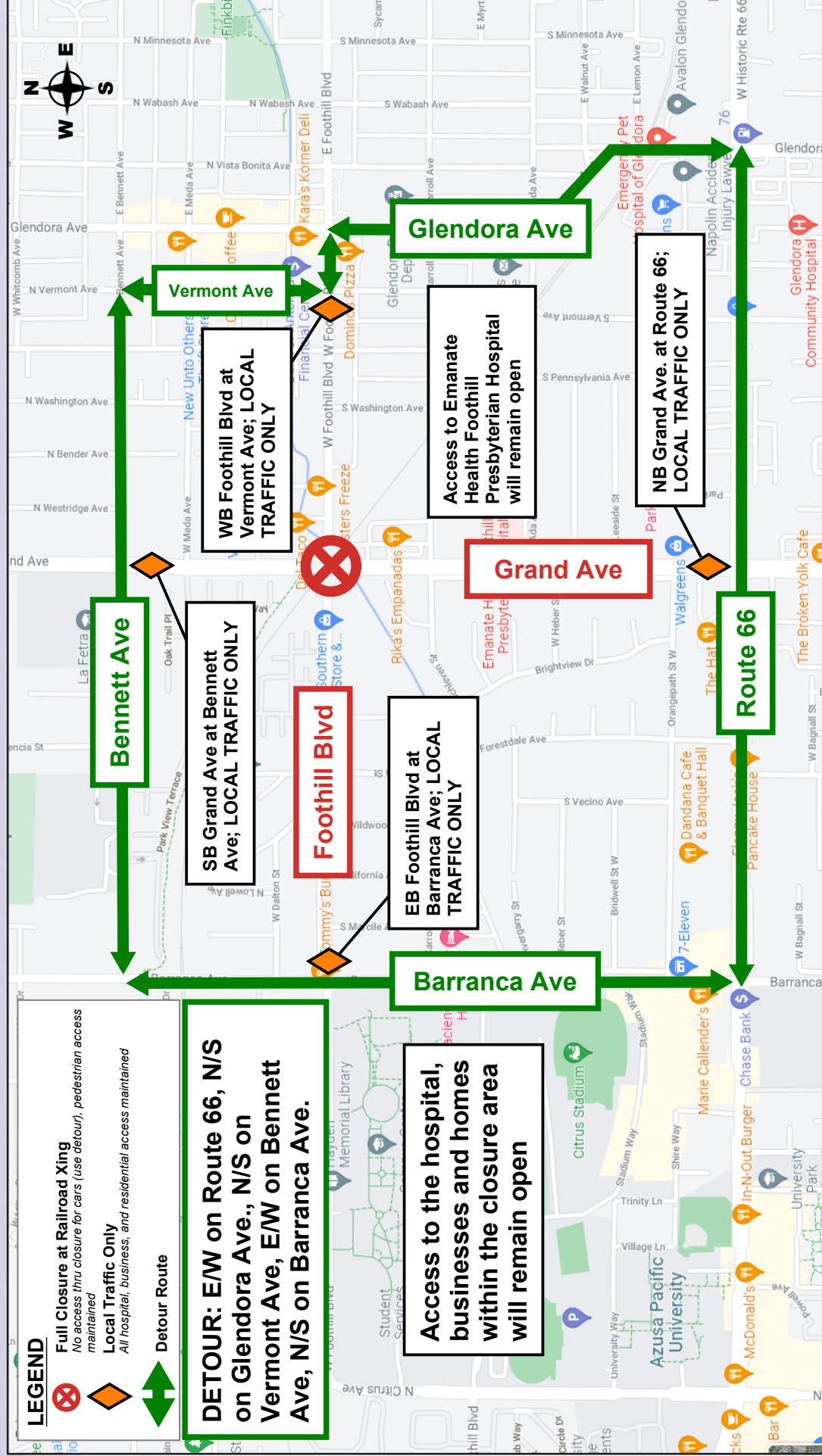
**General Project Questions:** (626) 471-9050 **Email:** [PublicAffairs@Foothillgoldline.org](mailto:PublicAffairs@Foothillgoldline.org)

**Stay ahead of construction, sign up for alerts: [www.foothillgoldline.org](http://www.foothillgoldline.org)**

\*Construction schedules are subject to change for various reasons, including, but not limited to, weather conditions and unforeseen delays.



### Detour route for Foothill Blvd. & Grand Ave. intersection full closure (Oct. 29 - Nov. 6)



### PLAN YOUR ROUTE AND BE PREPARED

- A detour route (see map below) will be in place during the 12 day closure and signage will be posted to direct motorists, trucks and pedestrians. Please follow detour signs.
  - ✓ Route 66 and Bennett Ave. (eastbound and westbound) will remain open and serve as detour routes, see details below.
  - ✓ Barranca Ave., Glendora Ave., and Vermont Ave. (northbound and southbound) will remain open and serve as detour routes.