



# NOTICE: Temporary Parking Restrictions for Large Equipment Delivery at Monte Vista Ave.

## THURSDAY, SEPTEMBER 8, 2022, 7:00 AM - NOON (CITY OF SAN DIMAS)

### CONSTRUCTION ACTIVITY

As part of the 9.1-mile, four-station Foothill Gold Line light rail project, KPJV will be restricting parking on Commercial St. & Monte Vista Ave. on Thursday, September 8th for a large equipment delivery. No Parking will be in place in the designated zones, as shown below, for the equipment delivery taking place from approximately **7:00 AM - Noon**.

### WHEN

On Thursday, September 8th, between the hours of 7:00 AM - Noon, there will be a large equipment delivery requiring parking restrictions. Regularly scheduled operations will continue through 5:00 PM.

### WHERE

No parking will be available on Commercial St. & Monte Vista Ave. in the areas designated in red on the map below; and crews will also utilize the San Dimas Park and Ride lot for staging.

### TRAFFIC ADVISORIES

- Temporary No Parking as shown in red on the map below.
- Pedestrian access across the Monte Vista Ave. railroad crossing will be temporarily unavailable (a pedestrian detour route will be in place).
- Access to all homes & businesses will be maintained, driveways north and south of the pedestrian crossing will remain accesible.

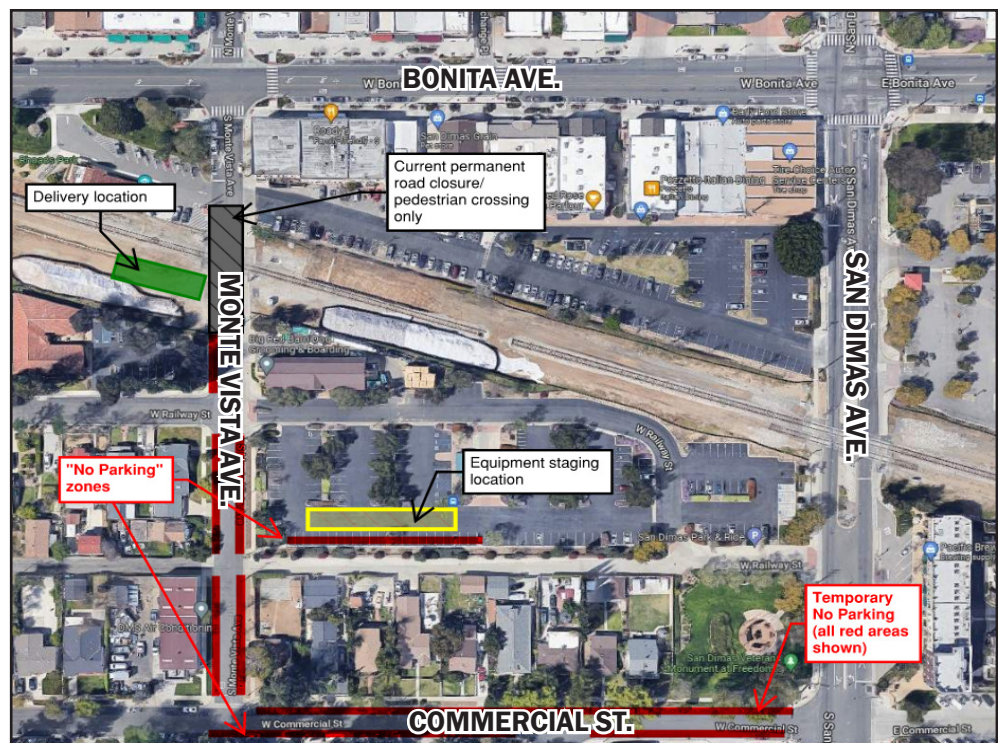
### NOTE TO RESIDENTS / BUSINESS OWNERS

Noise from construction equipment such as delivery trucks and back up alarms, will be produced.

### STAY SAFE

Please obey all posted construction signs and do not enter the construction work zone.

**Para información en español por favor llame o envíe un mensaje de texto a (626) 513-5788.**



### QUESTIONS?

**Project Construction Questions Hotline:** (626) 513-5788 **Email:** CommunityRelations@Kiewit-Parsons.com

**General Project Questions:** (626) 471-9050 **Email:** PublicAffairs@Foothillgoldline.org

**Stay ahead of construction, sign up for alerts: [www.foothillgoldline.org](http://www.foothillgoldline.org)**

*\*Construction schedules are subject to change for various reasons, including, but not limited to, weather conditions and unforeseen delays.*