



-Glendora to Pomona-

NOTICE: Early Morning Concrete Pour

BONITA AVE./CATARACT AVE. INTERSECTION (CITY OF SAN DIMAS)

TOMORROW MARCH 8, 2022

CONSTRUCTION ACTIVITY

As part of the Foothill Gold Line light rail project, KPJV will be working in the early morning hours TOMORROW, Tuesday, March 8, to complete a concrete pour for the new light rail bridge being built at the intersection of Bonita Ave. & Cataract Ave. in the city of San Dimas. The morning work hours will begin at 4:00 AM, and last approx. 6 - 8 hours. Throughout the duration of the bridge pour, there will be no new street closures. Current traffic patterns will be maintained.

WHEN

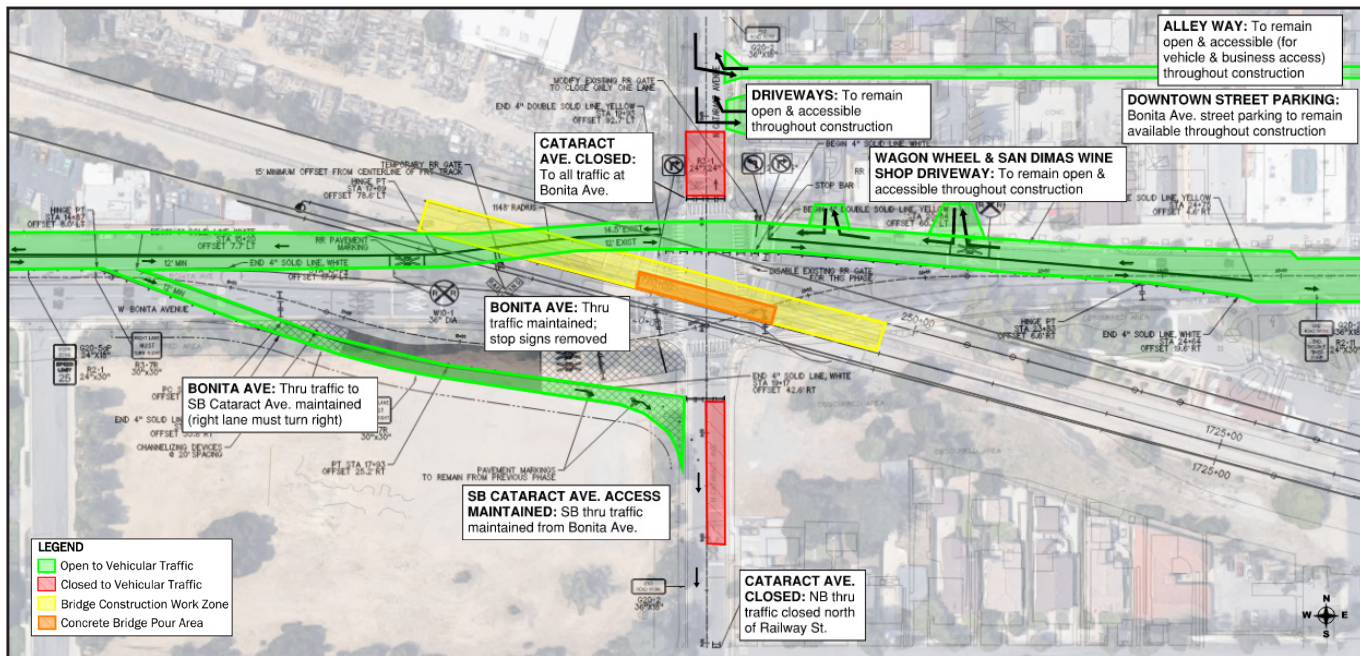
On Tuesday, March 8, 2022, starting at **4:00 AM** and lasting approximately **6-8 hours**.

WHERE

At the intersection of Bonita Ave. & Cataract Ave., in the City of San Dimas.

TRAFFIC ADVISORIES

No new street closures will be needed for this operation. All current traffic patterns will remain in place through the intersection. See map of current traffic patterns below:



NOTE TO RESIDENTS/BUSINESS OWNERS

Noise from construction equipment, construction vehicles, and light plants will be produced near the active work zones.

STAY SAFE

Please obey all posted construction signs and do not enter the construction work zone.

Para información en español por favor llame o envíe un mensaje de texto a (626) 513-5788.

QUESTIONS?

Project Construction Questions Hotline: (626) 513-5788 **Email:** CommunityRelations@Kiewit-Parsons.com

General Project Questions: (626) 471-9050 **Email:** PublicAffairs@Foothillgoldline.org

Stay ahead of construction, sign up for alerts: www.foothillgoldline.org

**Construction schedules are subject to change for various reasons, including, but not limited to, weather conditions and unforeseen delays.*