



Foothill Gold Line

KIEWIT-PARSONS, A JV

-Glendora to Pomona-

NOTICE: Storm Drain Improvements

VILLAGE WALK TOWNHOMES (CITY OF SAN DIMAS)

STARTING THE WEEK OF OCTOBER 18 - NOVEMBER 8, 2021

CONSTRUCTION ACTIVITY

As part of the Foothill Gold Line light rail project, crews will be constructing storm drain improvements and modifications to the existing city storm drain manhole structure south of the railroad corridor and within the San Dimas Village Walk community. In order to complete these improvements, crews will be removing a portion of the block wall and landscaping that are located within the storm drain easement. Throughout the duration of the work, the construction zone will be properly secured to ensure everyone's safety and the crews will maintain a clean working area. Once the work is complete, the block wall will be rebuilt, landscaping will be restored, and a final clean-up of the area will take place.

WHEN

Starting the week of October 18 and continuing thru Monday, November 8, 2021.

- Planned construction working hours: 7:00 AM - 5:00 PM. NOTE: Occasional longer work hours and construction on Sundays may be performed. However, additional information will be provided if needed.

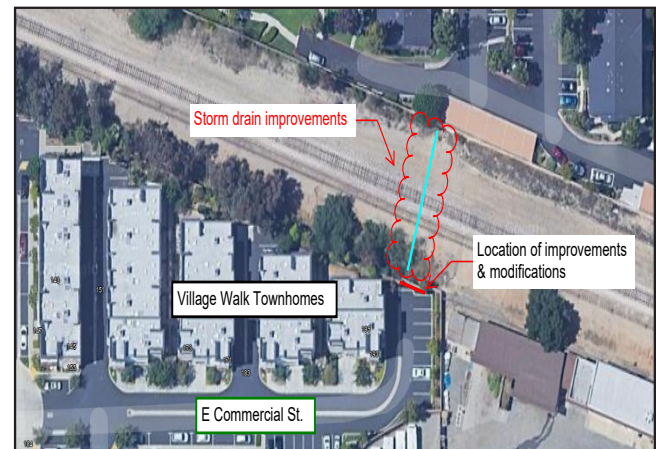
NOTE TO RESIDENTS

- Typical noise from construction equipment will be produced near the active work zones.
- The block wall area and placement of the City storm drain are outlined in the visual below.

STAY SAFE

Please do not enter the construction work zone.

Para información en español por favor llame o envíe un mensaje de texto a (626) 513-5788.



FOOTHILL GOLD LINE QUESTIONS?

Project Construction Questions Hotline: (626) 513-5788 **Email:** CommunityRelations@Kiewit-Parsons.com

General Project Questions: (626) 471-9050 **Email:** PublicAffairs@Foothillgoldline.org

Stay ahead of construction, sign up for alerts: www.foothillgoldline.org

**Construction schedules are subject to change for various reasons, including, but not limited to, weather conditions and unforeseen delays.*