



Foothill Gold Line

KIEWIT-PARSONS, A JV

-Glendora to Pomona-

NOTICE: Two Week Driveway Closure, Plus Permanent Turn Restrictions (Southern Driveway)

SUNNYSIDE SENIOR APARTMENTS (CITY OF SAN DIMAS)

OCTOBER 29 - NOVEMBER 12, 2021

CONSTRUCTION ACTIVITY

As part of the Foothill Gold Line light rail project, crews are nearing completion on the Walnut Ave. railroad crossing reconstruction. As part of the final activities before the street can reopen on November 12, crews will begin work on the center median and final paving and striping of the street. To perform this work, the southernmost driveway entrance to Sunnyside Senior Apartments will be full closed for approximately two weeks. Access to the property will be maintained at all times using the northern driveway entrance on Walnut Ave., see images below. Additionally, in accordance with California Public Utilities Commission safety requirements near railroad crossings, the southernmost driveway will be restricted to right-in and right-out turn movements once it reopens on November 12.

WHEN

Starting Friday, October 29 and continuing thru Friday, November 12, 2021, the southernmost driveway on Walnut Ave. into the Sunnyside Senior Apartments will be fully closed, 24 hours a day.

- Planned construction working hours: 7:00 AM - 5:00 PM. NOTE: Occasional longer work hours and construction on Saturday may be performed.

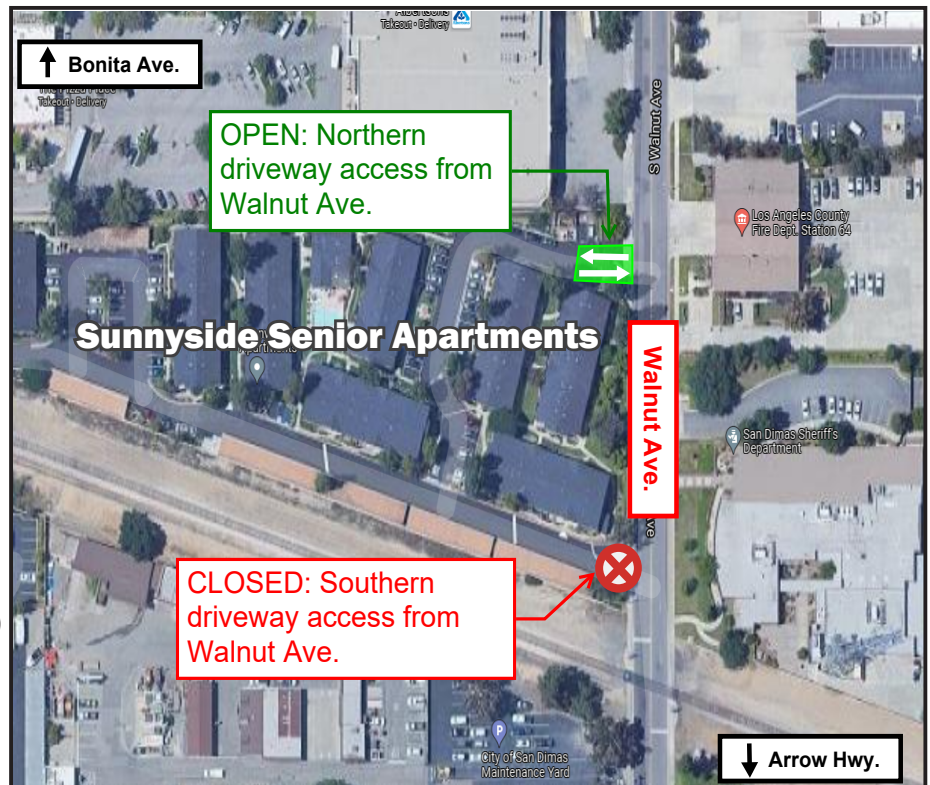
NOTES TO RESIDENTS

- Typical noise from construction equipment will be produced near the active work zones.
- The location of the closed driveway due to construction activities and available access into the Sunnyside Senior Apartments can be seen below.
- In accordance with California Public Utilities Commission safety requirements near railroad crossings, the southernmost driveway will be permanently restricted to right-in and right-out turn movements.

STAY SAFE

Please do not enter the construction work zone.

Para información en español por favor llame o envíe un mensaje de texto a (626) 513-5788.



FOOTHILL GOLD LINE QUESTIONS?

Project Construction Questions Hotline: (626) 513-5788 **Email:** CommunityRelations@Kiewit-Parsons.com

General Project Questions: (626) 471-9050 **Email:** PublicAffairs@Foothillgoldline.org

Stay ahead of construction, sign up for alerts: www.foothillgoldline.org

**Construction schedules are subject to change for various reasons, including, but not limited to, weather conditions and unforeseen delays.*