



Foothill Gold Line

KIEWIT-PARSONS, A JV

-Glendora to Pomona-

# NOTICE: Full Street Closure - Trucking Delivery Detour

## WALNUT AVE. AT RAILROAD CROSSING (CITY OF SAN DIMAS) JUNE 18 - NOVEMBER 18, 2021

### CONSTRUCTION ACTIVITY

Crews will be fully rebuilding the railroad crossing on Walnut Ave. north of Arrow Hwy. in the city of San Dimas as part of the 9.1-mile Foothill Gold Line light rail project. This work requires a **full closure of Walnut Ave. at the railroad crossing for approximately 5 months.**

### WHEN

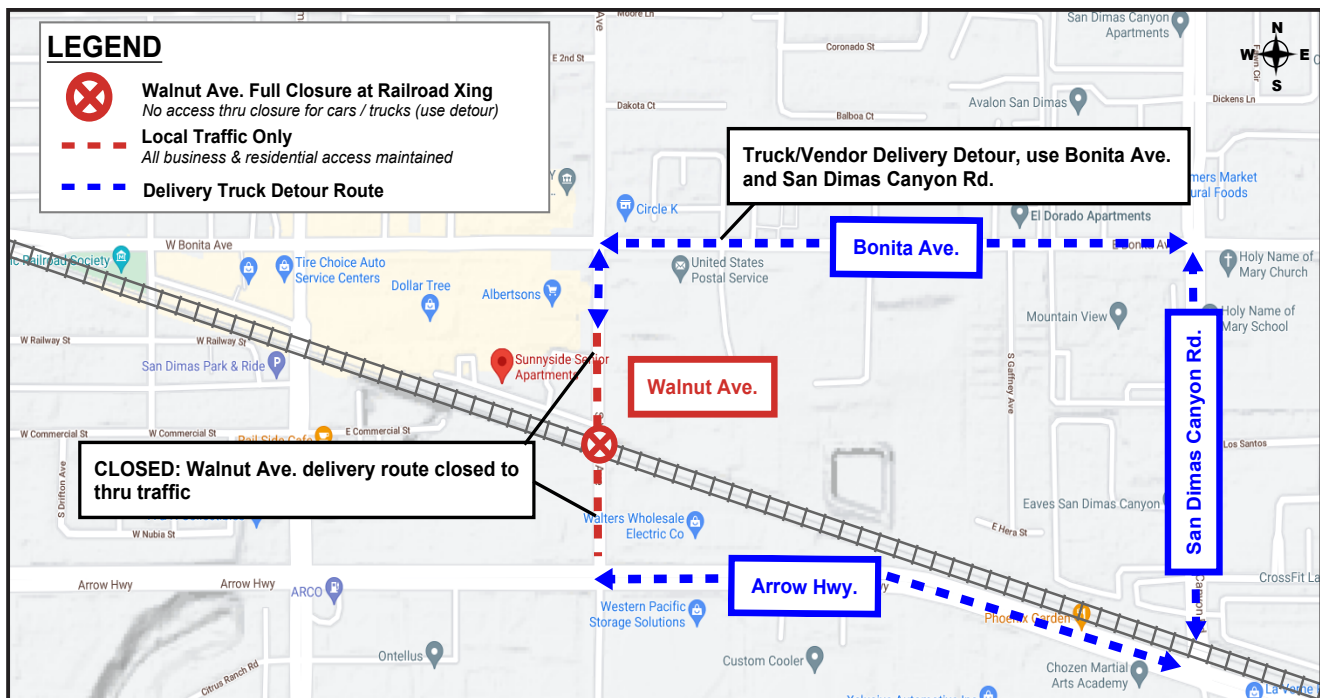
- Closure Period: June 18 thru November 18, 2021

### TRAFFIC ADVISORIES

- Walnut Ave. will be fully closed to vehicular traffic at the railroad crossing north of Arrow Hwy.

### PLAN YOUR ROUTE AND BE PREPARED

- A trucking delivery detour route (see map below) will be in place during the closure. Please follow detour signs.
  - ✓ Walnut Ave. will be fully closed to all traffic at the railroad crossing between Bonita Ave. and Arrow Hwy.
  - ✓ San Dimas Canyon Rd. will serve as the main trucking detour route, see details below.
  - ✓ Bonita Ave. (eastbound and westbound) will remain open to trucking deliveries.
  - ✓ Arrow Hwy (eastbound and westbound) will remain open to trucking deliveries.



### STAY SAFE

Please obey all posted construction signs and do not enter the construction work zone.

**Para información en español por favor llame o envíe un mensaje de texto a (626) 513-5788.**

#### QUESTIONS?

**Project Construction Questions Hotline:** (626) 513-5788 **Email:** CommunityRelations@Kiewit-Parsons.com

**General Project Questions:** (626) 471-9050 **Email:** PublicAffairs@Foothillgoldline.org

Stay ahead of construction, sign up for alerts: [www.foothillgoldline.org](http://www.foothillgoldline.org)

*\*Construction schedules are subject to change for various reasons, including, but not limited to, weather conditions and unforeseen delays.*