



Foothill Gold Line

KIEWIT-PARSONS, A JV

-Glendora to Pomona-

NOTICE: Tree Removal

TREE REMOVAL EAST OF THE RAILROAD CORRIDOR, NORTH OF THE 210 FREEWAY (GLENDDORA)

MAY 3 - MAY 10, 2021

CONSTRUCTION ACTIVITY

As part of construction for the 9.1-mile, Foothill Gold Line light rail project from Glendora to Pomona, crews will be removing the trees and minor vegetation north of the 210 Freeway, south of Deserta Dr. between the railroad corridor and Lone Hill Ave. Trees are being removed on Caltrans right of way for the construction of an emergency access road for Gold Line safety and maintenance purposes.

WHEN

Beginning Monday, May 3rd and continuing thru May 10th, tree removal activities will be performed within the red work zones (shown in the map below) during day shift hours Monday - Saturday, from 7:00 AM - 5:30 PM.

WHERE

Construction activities will take place north of the 210 Freeway, south of Deserta Dr. between the railroad corridor and Lone Hill Ave.

WHAT TO EXPECT

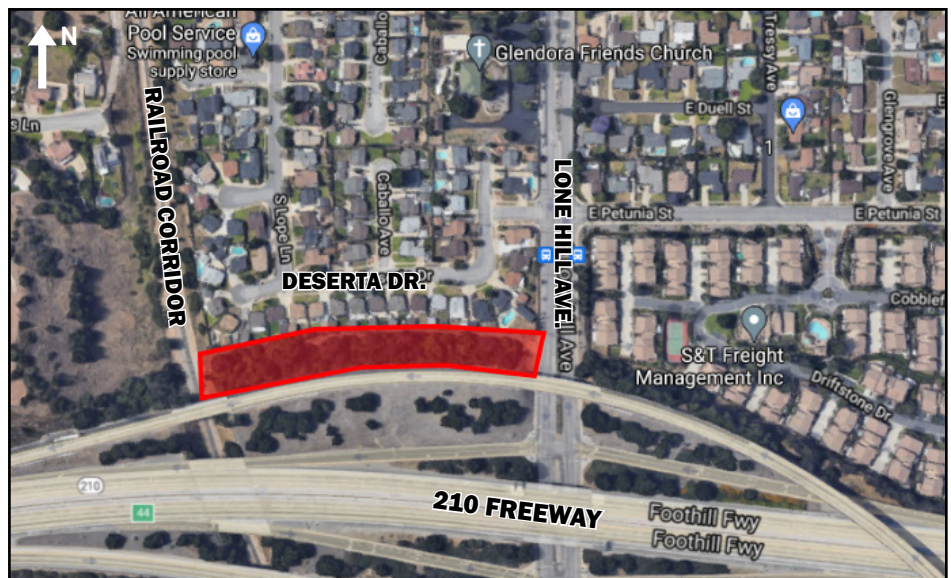
Noise from construction and landscaping equipment will be produced near the active work zones. Watering equipment will be utilized for dust control where needed.

STAY SAFE

Please obey all posted construction signs and do not enter the construction work zone.

STAY AHEAD

To stay ahead of construction, sign up for alerts at:
www.foothillgoldline.org



Para información en español por favor llame o envíe un mensaje de texto a (626) 513-5788.

Project Construction Questions Hotline: (626) 513-5788 Email: CommunityRelations@Kiewit-Parsons.com

General Project Questions: (626) 471-9050 Email: PublicAffairs@Foothillgoldline.org

*Construction schedules are subject to change for various reasons, including, but not limited to, weather conditions and unforeseen delays.