



Foothill Gold Line

KIEWIT-PARSONS, A JV

-Glendora to Pomona-

UPDATED NOTICE: Corridor Tree Removal

TREE REMOVAL WITHIN THE RAILROAD CORRIDOR (ROUTE 66 TO THE SAN DIMAS WASH, CITY OF GLENDORA)

EXTENDED NOVEMBER 20 - DECEMBER 23, 2020

CONSTRUCTION ACTIVITY

As part of construction for the 9.1-mile, four-station Foothill Gold Line light rail project from Glendora to Pomona, crews will be removing all vegetation along the railroad corridor, including trees near your property. All trees being removed within the railroad corridor have been identified for their species and size and will be replaced within the City as required by the Project's Tree Replacement Plan.

WHEN

Ongoing from Friday, November 20th, and continuing daily thru Wednesday, December 23rd (excluding holidays), tree removal activities will be performed within the corridor during day shift hours Monday - Saturday, from 7:00 AM - 5:30 PM.

WHERE

Construction activities will take place throughout the railroad corridor from Route 66 to the San Dimas Wash, west of Lone Hill Ave.

WHAT TO EXPECT

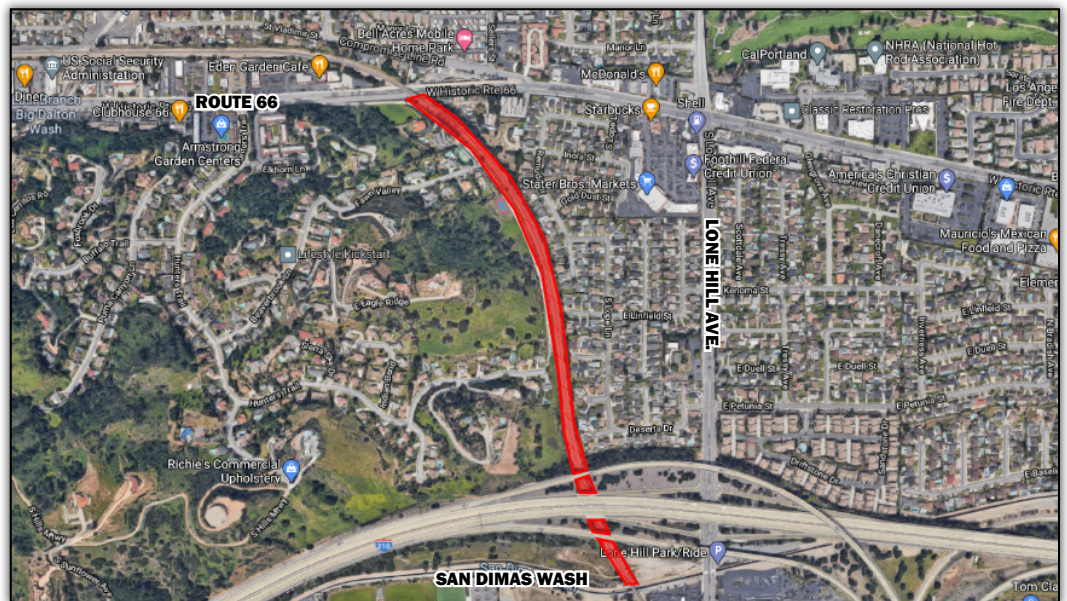
Noise from construction and landscaping equipment will be produced near the active work zones. Watering equipment will be utilized for dust control where needed.

STAY SAFE

Please obey all posted construction signs and do not enter the construction work zone.

STAY AHEAD

To stay ahead of construction, sign up for alerts at:
www.foothillgoldline.org



Para información en español por favor llame o envíe un mensaje de texto a (626) 513-5788.

QUESTIONS?

Project Construction Questions Hotline: (626) 513-5788 **Email:** CommunityRelations@Kiewit-Parsons.com

General Project Questions: (626) 471-9050 **Email:** PublicAffairs@Foothillgoldline.org

**Construction schedules are subject to change for various reasons, including, but not limited to, weather conditions and unforeseen delays.*