



Foothill Gold Line

KIEWIT-PARSONS, A JV

-Glendora to Pomona-

# Notice: Corridor Tree Removal

## TREE REMOVAL WITHIN THE RAILROAD CORRIDOR (CITY OF GLENDORA)

**EXTENDED: AUGUST 24 - SEPTEMBER 4**

### CONSTRUCTION ACTIVITY

As part of construction for the 9.1-mile, four-station Foothill Gold Line light rail project from Glendora to Pomona, crews will be removing all vegetation along the railroad corridor, including trees near your property. All trees being removed within the railroad corridor have been identified for their species and size and will be replaced within the City as required by the Project's Tree Replacement Plan.

### WHEN

Continuing from Monday, August 24th, and continuing daily thru September 4th, tree removal activity work will be performed within the corridor during day shift hours from 7:00 AM – 5:30 PM.

### WHERE

Construction activities will take place throughout the railroad corridor from Citrus Ave. to Grand Ave.

### WHAT TO EXPECT

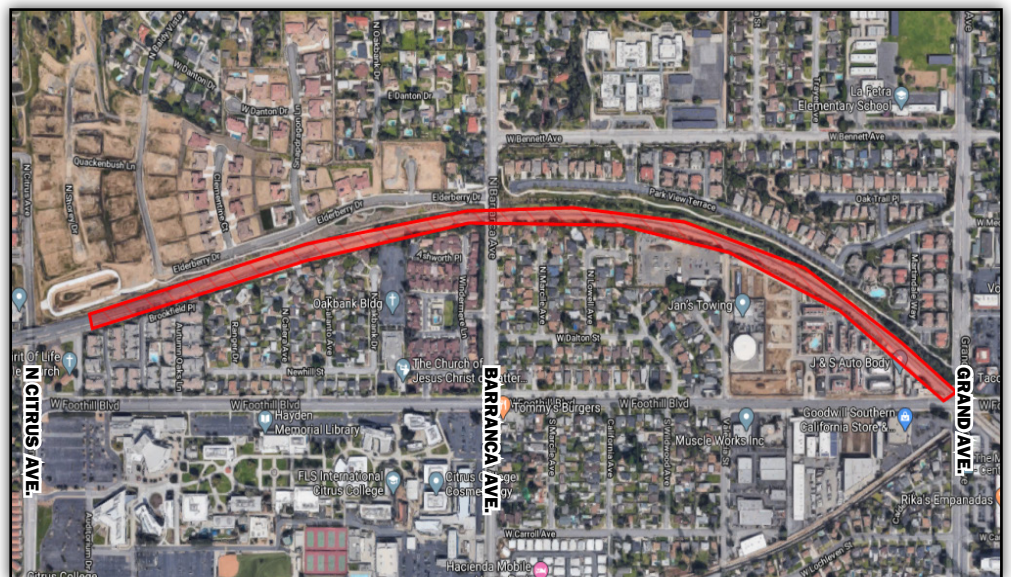
Noise from construction and landscaping equipment will be produced near the active work zones. Watering equipment will be utilized for dust control where needed.

### STAY SAFE

Please obey all posted construction signs and do not enter the construction work zone.

### STAY AHEAD

To stay ahead of construction, sign up for alerts at:  
[www.foothillgoldline.org](http://www.foothillgoldline.org)



**Para información en español por favor llame o envíe un mensaje de texto a (626) 513-5788.**

#### QUESTIONS?

**Project Construction Questions Hotline:** (626) 513-5788 **Email:** [CommunityRelations@Kiewit-Parsons.com](mailto:CommunityRelations@Kiewit-Parsons.com)  
**General Project Questions:** (626) 471-9050 **Email:** [PublicAffairs@Foothillgoldline.org](mailto:PublicAffairs@Foothillgoldline.org)

*\*Construction schedules are subject to change for various reasons, including, but not limited to, weather conditions and unforeseen delays.*