



# Courtesy Notice: Lane Closures by SoCal Gas

## BARRANCA AVE. AT ELDERBERRY DR. (CITY OF GLENDORA)

### JUNE 29 - JULY 24

#### CONSTRUCTION ACTIVITY

In advance of the Foothill Gold Line light rail project’s mainline construction, Southern California Gas Company (SoCal Gas) will be performing drilling operations to relocate and protect their lines underneath the Barranca Ave. railroad crossing. As part of this work, SoCal Gas will close the southbound lanes of Barranca Ave. at Elderberry Dr. in the City of Glendora.

#### WHEN

Monday, June 29 thru Friday, July 24 (8:00 AM - 4:30 PM Weekdays (Mon-Fri))

#### WHERE

Construction activities will take place on the southbound lanes of Barranca Ave. at Elderberry Dr., and continue south of the railroad tracks.

#### WHAT TO EXPECT

Typical noise from construction equipment will be produced near the active work zones such as a drill rig and construction vehicles. Work zone will be coned off, vehicle and pedestrian access will be maintained.

#### TRAFFIC ADVISORIES

Southbound lanes on Barranca Ave from Elderberry Dr thru the railroad crossing will be closed. All thru northbound and southbound access will be maintained with one lane open in each direction. Pedestrian access will remain open via the sidewalk on east side of Barranca Ave. Residential access will be maintained at all times.

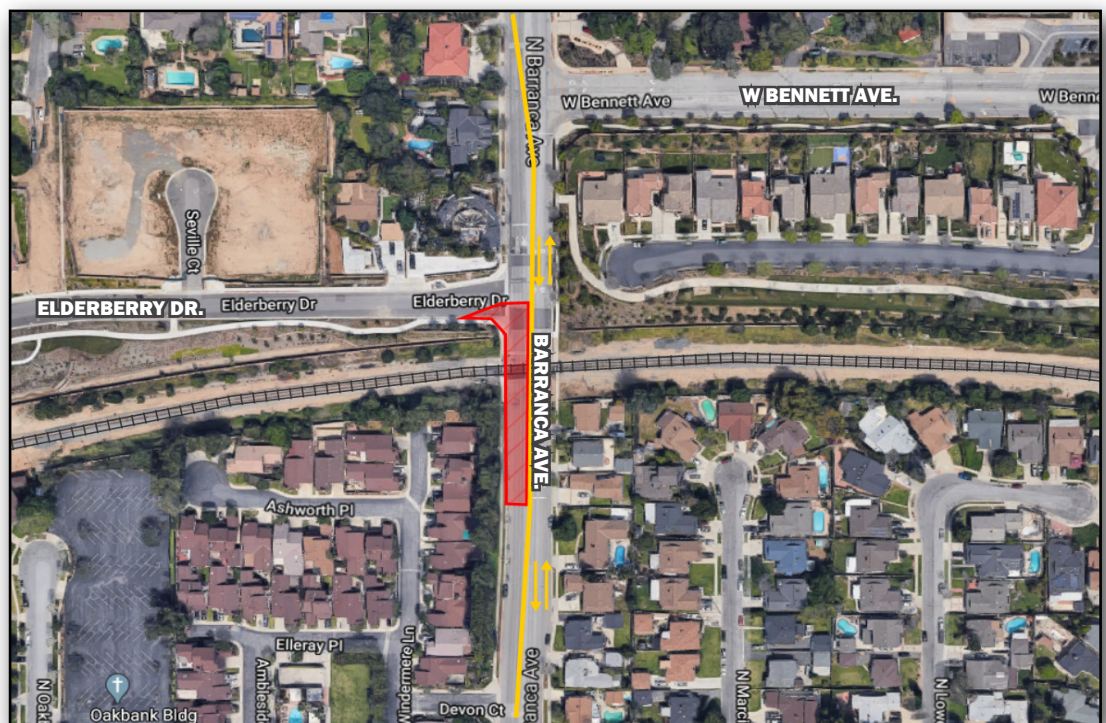
#### WORK ZONE

The red area in the map shows the work zones. The yellow area shows open lanes with thru access and sidewalk.

#### WHO TO CONTACT:

##### SoCal Gas -

- Questions related to SoCal Gas Construction: **1-877-238-0092**
- Gas Emergency: **1-800-427-2200**



#### FOOTHILL GOLD LINE QUESTIONS?

**Project Construction Questions Hotline:** (626) 513-5788 **Email:** CommunityRelations@Kiewit-Parsons.com

**General Project Questions:** (626) 471-9050 **Email:** PublicAffairs@Foothillgoldline.org

**Stay ahead of construction, sign up for alerts: [www.foothillgoldline.org](http://www.foothillgoldline.org)**

*\*Construction schedules are subject to change for various reasons, including, but not limited to, weather conditions and unforeseen delays.*